

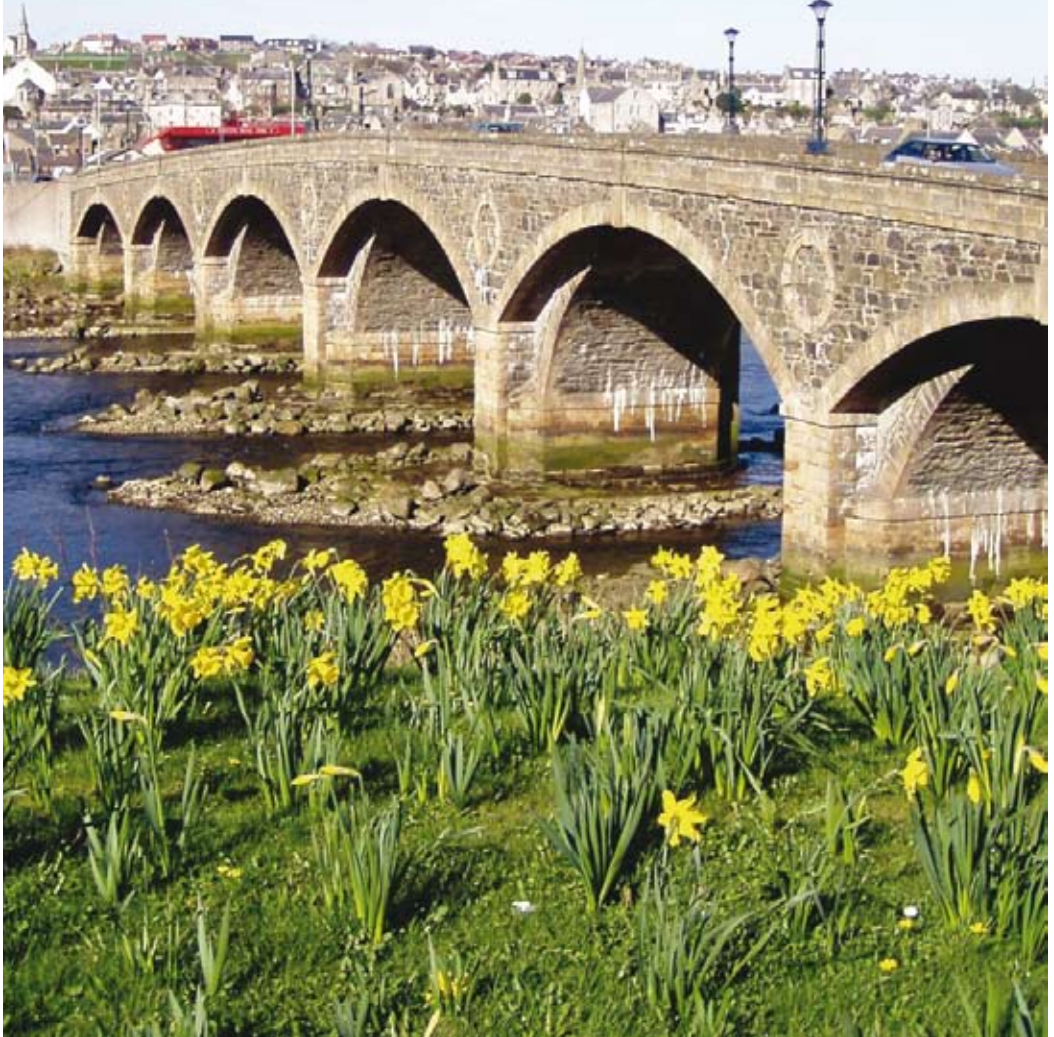
B P L

BANFFSHIRE PARTNERSHIP

PARTNERSHIP UPDATE

WWW.BANFFSHIREPARTNERS.CO.UK

ISSUE 13 - 2011



FREE INSIDE THIS ISSUE . . . NEWS FROM AROUND THE
AREA . . . TRANSPORT NEWS . . . AND LOTS MORE

developing communities



“support for an active community”

community development

marketing support

project development advice

fund-raising advice

local networking & gatherings

research & consultation

... a voice for the area

B P L

BANFFSHIRE PARTNERSHIP
DEVELOPING COMMUNITIES

The Old School Boyndie Banff AB452JT

T: 01261 843286 F: 01261 843598 E: bpl.contact@tiscali.co.uk

PARTNERSHIP UPDATE

Banffshire Partnership Ltd.
The Old School, Boyndie,
Banff, AB45 2JT
T: 01261 843286
F: 01261 843598
E: bpl.contact@tiscali.co.uk

BOARD OF DIRECTORS

*Directors can be contacted
through the Partnership office -
01261 843286.*

Directors meet bi-monthly
(or more often if necessary).

CHAIR Robin Maddock
SECRETARY Iain Taylor
TREASURER Ross Balharry
Denis Askham
Sandy Duncan
Roger Goodyear
Ian Gray
Patricia Seligman

DESIGN Kay Beaton,
Purple Creative Design

PRINT Halcon, Aberdeen

*Banffshire Partnership Ltd.
is a Company Limited by Guarantee
in Scotland. Reg No. 201922.*

*Registered Office: 1a Cluny Square,
Buckie, AB56 1AH.*

*Recognised as a Charity by the
Inland Revenue. No. SC029693.*

*Banffshire Partnership Ltd.
is recognised as a Local Rural
Partnership by the Scottish Executive.*

**DEVELOPMENT
TRUSTS ASSOCIATION
SCOTLAND**
the community-based regeneration network



Green
Butterfly
Award

Chairman's Letter

Welcome to the latest edition of the Banffshire Partnership Newsletter. It has been another challenging year for everybody at the Partnership and I would like to thank Duncan Leece, his staff and especially the volunteers for all their efforts in meeting those challenges.

Since the Community Transport side of the business started, it has grown steadily and is now the main activity of Banffshire Partnership in financial terms.

Although community hire activity has reduced slightly the dial-a-bus is still very well used and the annual survey of our passengers shows how valuable this service is to them, not just in terms of getting them to the shops and on outings, but in terms of social interaction and helping to alleviate social exclusion.

One of the success stories has been the increase in the training side of the Community Transport business and we are looking at ways to build and expand this activity, not just related to transport.

As the majority of funding for the Community Transport side comes from Aberdeenshire Council we are always looking at ways to make the operation more efficient. This is even more important now and will be in the future in view of the

expected severe squeeze on public sector finances.

Although the smaller part of the activities of Banffshire Partnership in financial terms, the Community Economic Development side plays a very large role in the communities that it serves.

As well as being an active member of the local Community Planning Partnership, it has assisted many community groups with projects, business plans and funding applications over the years. In the last year these have included :-

- New Aberdour & Tyrie Community Council
- Kinship for Kids, Fraserburgh
- Riverside Christian Church
- Scottish Traditional Boat Festival
- Banffshire Coast Tourism Partnership

One of the organisations that received significant assistance was the COAST festival. Banffshire Partnership, along with the festival's board resolved the difficulties surrounding putting on this year's festival and we were delighted with the outcome.

As with the Community Transport side of the business the CED side is majority funded by Aberdeenshire Council. Without this funding we would be unable to help the many



community groups that come to us and in fact we are getting more enquiries than we currently have resources, both human and financial to handle. A Service Level Agreement was put in place between Banffshire Partnership and Aberdeenshire Council in April 2009 lasting for 1 year and I'm pleased to report that all the requirements of that agreement were fulfilled by the Partnership. A similar Service Level Agreement supporting the CED funding has been put in place for this year.

The board is very well aware that we face tightening budgets in the next few years. However, it is our wish to continue with the range of activities that we currently undertake and where possible expand them in line with need in our community, and make the organisation more financially self-reliant.

Robin Maddock

Robin Maddock, Chairman
contact me at
bpl.contact@tiscali.co.uk

A COPY OF THIS NEWSLETTER IS AVAILABLE IN LARGE FORMAT TEXT IF REQUIRED.

CONTENTS

In Every Issue

- 1 Chairman's Letter
- 2 Meet The Staff
- 2 Our Valued Volunteers
- 3 A Word From Our DOO!
- 4 Banffshire Partnership Area
- 5 Banffshire Partnership Aims & Values
- 23 Developing Communities
- 24 Making It Real
- 25 Community Planning
- 26 Transport Service For The Community
- 27 Training For The Community
- 28 Useful Community Contact Numbers

Featured Groups

- 3 Deveron Stroke Club
- 6 Aberchirder & District Community Association
- 7 Banff and Macduff Community Trust
- 8 Banff Castle Community Association
- 9 Banff Preservation & Heritage Society
- 10 Banffshire Coast Tourism Partnership
- 11 Banffshire Maritime Heritage
- 13 Boyndie Trust Limited
- 14 Coast Festival
- 15 Gamrie Business Forum
- 16 Home-Start Deveron
- 17 Portsoy 75 Club
- 18 Portsoy Salmon Bothy
- 19 Portsoy Thrift Shop
- 19 Portsoy Pavilion
- 20 Riverside Christian Church
- 21 Scottish Traditional Boat Festival
- 22 Whitehills & District Community Council

... Meet The Staff

Developing Communities - 01261 843286



Duncan Leece
Director of Operations



Roger Smart



Kay Beaton

Community Transport - 01261 843598



Jan Maddock
Transport Manager



Pete Danks



Derek Anthony



Michelle Reynard



Glenys Danks



Wendy Smith



Heike Wilson



Roy Makepeace



Tina Coveney



Alan Thomson

Our Valued Volunteers

Many of our passenger assistants and drivers - whether for the Dial-A-Bus or community groups - are volunteers, whose contribution is greatly valued by all who benefit. If you would like to join them, it's necessary to register with us and take up appropriate training.

If you think you can help please contact us:

Banffshire Partnership Community Transport, The Old School, Boyndie, Banff. AB45 2JT
Tel: 01261 843598 E-mail: bpl.transport@banffdab.org.uk

A Word From Our DOO!

I am delighted that you have picked up a copy of Partnership Update, which we publish annually. Our aim is that, once you have read it, you will have a good flavour not only of Banffshire Partnership Ltd, but the community in which we live and work.

On the pages that follow, we will explain more about BPL, and what we do.

We are very proud of our community, and having heard about the level of activity happening within it, and remember we are only mentioning a small portion of it in this book; we hope you will agree with our pride.

Actually, what we hope is that you will be inspired to volunteer to help with a project,

or maybe even start one yourself.

We know that the barrier to doing more is not lack of ideas, not lack of need, not even lack of money (although that seems ever more difficult to raise) . . . it is the number of volunteers that sets the limit to what we can achieve as a community.

BPL is lucky to have some wonderful volunteers, helping us with jobs as diverse as working on our buses, through to serving as a Director on our Board. I am lucky to have excellent paid staff too, all of whom I would like to thank publicly here in this introduction.

We view the future with equal measure of satisfaction and frustration. Satisfying to see

interest in community projects, particularly those with an economic development element, has not just been sustained over the years, but seems ever to be rising. New groups become motivated to new projects, having witnessed the success of others; and older-established groups seem ready to take on further challenges, having met with success before.

The frustration comes from Banffshire Partnership seeing all these opportunities for the community, being asked for help, yet our staff and financial resources cannot possibly meet all demands, so BPL Directors end up having to prioritise who to help, and to what degree.

And somehow we have to find time to further our own



expansion and development too, particularly in the provision of training services, as outlined later in this book. 2011 is going to be another busy year.

Duncan D Leece,
Director of Operations (DOO)

contact me at
bpl.contact@tiscali.co.uk

Stop Press . . . Stop Press . . .

Deveron Stroke Club

Was formed twenty years ago to help anyone who has suffered a stroke in Banff, Turriff and surrounding areas. Volunteers run the club and the fact that some of our original helpers are still with us is an indication of good team work.

Since its inception, thanks to the generosity of our many friends and to our own fund-raising efforts, the club has been self-supporting, apart from some initial help from the Social Work Dept with transport arrangements.

Our aim is to give our

members and their families social and therapeutic support and to engage them in a variety of enjoyable activities, stimulating but not tiring.

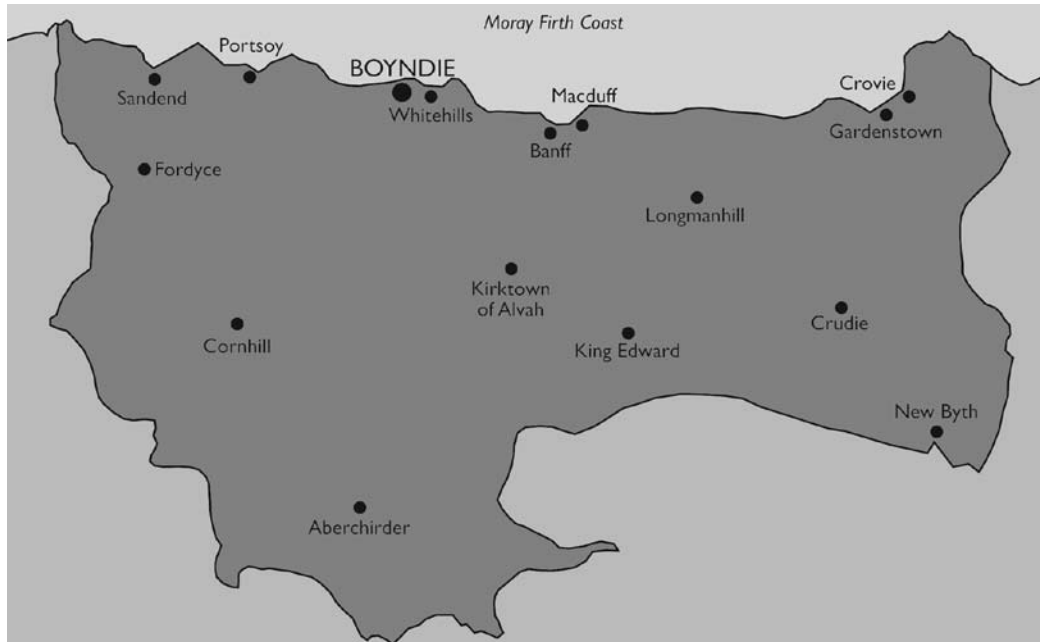
We meet on Friday mornings at Bridge Street Community Centre Banff from 10am to noon and

are always very happy to welcome new members.

Deveron Stroke Club
Janet Clark,
Club Secretary,
c/o Bridge Street
Community Centre,
Banff

Editorial in this newsletter may not be reproduced in whole or part without prior written permission of the Banffshire Partnership. Articles published do not necessarily reflect the opinions of the Partnership.

Banffshire Partnership Area



The Banffshire Partnership area covers the Community Council areas of:

- ***Aberchirder & Marnoch***
- ***Alvah & Forglan***
- ***Banff & Macduff***
- ***Cornhill & Ordiquhill***
- ***Fordyce & Sandend***
- ***King Edward & Gamrie***
- ***Portsoy***
- ***Whitehills***

The following pages highlight some of the activities and events, which have been happening throughout the area over the past eight months, as well as giving an insight into some of the events which will be taking place next year.

It is our intention to publish an annual Partnership Update. The next edition of the newsletter - Issue 14 - will appear in late 2011, so don't miss out on a great opportunity to get some free publicity for your group's activities or forthcoming events.

Please send any articles, photographs, adverts or announcements, which you would like to be included to us - we look forward to hearing from you!

**Banffshire Partnership,
The Old School, Boyndie, Banff, AB45 2JT
T: 01261 843286
F: 01261 843598
E: bpl.contact@tiscali.co.uk**

Banffshire Partnership Aims And Values

OUR PURPOSE:

Within our area (*Aberchirder & Marnoch, Alvah & Forglan, Banff & Macduff, Cornhill & Ordiquhill, Fordyce & Sandend, King Edward & Gamrie, Portsoy, Whitehills*), to contribute to the economic, social and environmental well-being of local communities by;

- valuing the work of volunteers
- creating opportunities for employment based on the sustainable use of local culture, skills and resources,
- enabling and encouraging lifelong learning amongst local people.

We also aim to encourage and support partnership working between community groups and private, public and voluntary organisations.

VALUES: We try to:

- encourage participation and consensus
- be open and transparent in our dealings
- maximise resources - human, physical and financial
- remain people focused

OBJECTIVES:

To encourage and support communities to run and participate in activity that will help them develop.

Provide rural transport solutions to individuals and communities, where mainstream public transport is inaccessible.

Specific encouragement will be given to projects that have an economic benefit and/or develop partnership working with other groups and public agencies, such as the Local Authority.

The Partnership has a particular interest in tourism initiatives and ideas to promote the use of local products and local suppliers.

It is Banffshire Partnership's observation and belief that the more local people participate in and take ownership of activities within their communities, the better that place will become to live in.

Practical ways in which Banffshire Partnership supports projects include:

- Project management advice, and capacity building of groups as a whole, and individual members.
- Assistance with funding applications, or development of financial management packages.
- Putting groups in contact with others who have done similar projects, and helping the sharing of knowledge.
- Reducing rural isolation, and social exclusion, through transport initiatives and opportunities for individuals to access community activity.
- Facilitating two-way communication between local communities, and public agencies, or policy makers at regional and national level.



Aberchirder & District Community Association

- signage
- An annual gala in conjunction with St Marnan's Sports Club
- Christmas lights
- Flower tubs and hanging baskets
- A community website (www.foggieloan.co.uk) including a Virtual Museum
- Several local history and information publications.

The major activity in 2010 was the completion of an £80,000+ environmental improvement scheme which has transformed the south side of The Square, the number one issue identified in the Making It Real Community Action



It is now 15 years since Aberchirder & District Community Association was set up to undertake a community pavilion project at McRobert Park and to act as an umbrella organisation for local groups.

In that time - in partnership with Aberdeenshire Council and other agencies, and funded by the Council, the National Lottery and most recently the Aberdeenshire LEADER programme - it has achieved a lot in terms of improving local facilities, including:

- A community pavilion with members' gym and changing rooms
- Improvements to Cleanhill Wood
- A network of paths around the village
- A coat of arms and

Plans published in 2006 and 2009. The project was carried out by Highland Stoneways of Turriff for the Association in conjunction with Aberdeenshire Transport & Infrastructure and funded by Aberdeenshire Council and LEADER programme.

As time passes organisations change, and ADCA now largely plays the role of an amenities committee rather than umbrella organisation although the demise of the Community Council in 2009 means the Association is also now the contact group for Community Partnership partners

requiring information and feedback.

The work of the Association depends on local people volunteering to play their part and - as everywhere - such people are increasingly thin on the ground. Whether or not you agree with Mr Cameron's idea of the Big Society you might want to contribute to the community where you live. If so, please contact the Association Secretary Linda Farquhar on 01466 780512.

**Linda Farquhar, Secretary,
Aberchirder & District
Community Association
01466 780512
www.foggieloan.co.uk**

Banff and Macduff Community Trust Limited

Banff and Macduff Community Trust Ltd was formed in 2009 in order to address the social, economic and environmental needs of our two wonderful towns. It is a not-for-profit company limited by guarantee, but also a membership organisation. Local residents and people who work in the towns form the majority of the membership, but those who have an interest in the towns can become associate members.

In the first year of the Trust's existence, the focus was very much on laying the foundations of the direction of the Trust

and how it would achieve its aims and objectives. The past 12 months have seen a drive towards project delivery.

During the summer of 2010, the Trust opened the doors of The Green Tree - a coffee house and restaurant based at 18 Castle Street, Banff. The building was formerly used as a café and chip shop, but had lain empty for almost two years. It was suffering increasingly from a neglected appearance and the next step for the landlord would have been to board the premises up.

The venture has created a number of full and part-time posts. Any

profit generated by The Green Tree will be used to support the Trust in its aims of making the towns better places in which to live, work and visit.

A floral improvement group - In Bloom - was set up to look at ways in which the flower displays in the towns could be enhanced. A hard working group of volunteers has focussed its work on Banff Castle grounds and Airlie Gardens, and was responsible for erecting, planting up and watering dozens of hanging baskets in the two towns.

In Bloom has also been the driving force behind a new project on the Trust's radar.



Volunteers struck on the idea of restoring the crumbling winery and potting shed at Airlie Gardens - also known as Duff House Gardens - and using these listed buildings as a horticultural training resource. It is hoped that significant progress will be made on this project in 2011.

The Trust is also looking into the prospect of harnessing the power of renewable energy as part of a long-term strategy towards its sustainability.

Membership forms for the Trust are available online at www.bmct.co.uk along with all the latest news from Banff and Macduff Community Trust.

For further information, contact
01261 815185
info@bmct.co.uk
www.bmct.co.uk

Banff Castle Community Association

As Banff Castle Community Association looks forward to its Diamond Jubilee in 2011 we would like to share with you some of the exciting developments currently taking place at the Castle. As we go to print the builders are re-instating the West Flanking Wall. What's so exciting about that? Well, it restores John Adam's Georgian frontage to its original design for starters *and* creates a secure, and very sheltered, courtyard behind it. This means that we can begin to roll out an extensive programme of outdoor events which will attract locals and tourists alike. These events can be anything from live music to craft markets, theatre productions, food fayres and puppet shows. Imagine it!

We are already three quarters of the way to finding funding for the West Pavilion Development which will turn the currently

unused old stable block into a hive of activity. The hub of this activity will be The Kelpie Café, Arts and Folklore Centre, offering a simple contemporary menu at indoor and outdoor seating areas, where people can come and meet like-minded folk in a friendly, informal environment.

Folklore involves the development and continuation of culture and so events and activities will range from festivals to the learning of new crafts, to visiting an exhibition, watching or making a film or making your own, listening to music or recording a CD, discussing books or writing your own.

Banff Castle is a community facility run by volunteers which receives *absolutely no core funding*, with income raised through its room hire, office rents and events. All of this adds up to a very unique, sustainable, community facility. If you would like to

play a part in this development, either through time, talent or money, don't be shy . . .

Those are the plans, which, after two years in the development, are finally coming to fruition. What we have actually achieved so far includes:

- Our first summer season of events and activities;
- A massive increase in activities within the castle and grounds;
- A licence for wedding ceremonies to take place in the castle and grounds;
- Climate Challenge funding to install insulation and secondary glazing;
- Planning permission for all

the developments and

- LEADER, Community Assets and THI funding for The Kelpie Café, Arts and Folklore Centre.

Our community of user groups has been very supportive during all the changes and the Association looks forward to working and growing this community into the future.

**Banff Castle
Community Association
Co-ordinator
01261 815325
banffcastle@yahoo.co.uk**

Visit www.banffcastle.org.uk for up to the minute news on events and activities



Banff Preservation & Heritage Society

Our Society was set up in the 1960s to stop buildings being demolished. You might think there are laws to protect historic buildings and whilst there is some safety in being Listed they can nonetheless be at risk. We have all seen Low Street closed because a Listed building in a conservation area had not been looked after, and suddenly it seemed we were on the verge of having another gap site in the town. At moments like this Preservation Societies are needed.

An even more interesting building, one of the glories of Banff, is progressively

more and more at risk. This is the Fishing Temple on an island in the Deveron, a wonderful piece of classical architecture.

Some years ago the Society carried out a feasibility study of what could be done with it. We had thoughts of a centre for nature study courses for young people but this fell through due to access problems.

Time has passed, nature has taken its course and the roof fell in during the 1970s and there is a tree growing up inside. Something really must be done. The owners very helpfully will give us the building on a long lease, so that we

can qualify for grants to restore it.

The rooms in use must be upstairs, because islands in the Deveron are liable to flooding. Richard Leith, on our committee, is masterminding this very exciting project.

Have you seen our handsome new plaques around the town, in our new livery matching our coat of arms?

And did you know that, thanks to collaboration between Aberdeenshire Museums Service, our Society and the Banffshire Maritime and Heritage Association, the town's museum is now the

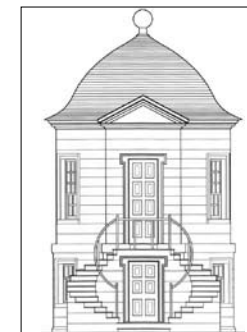


Banff Community Museum, and open all the year round?

And have you seen our website www.banffpreservationandheritagesociety.org.uk?

Anyone with an interest in the past of Banff and Macduff and district is very welcome to join us.

**Contact
Alistair Mason, Secretary,
14 Old Castlegate,
Banff AB45 IDE
01261 812941
www.banffpreservationandheritagesociety.org.uk**





The Banffshire Coast Tourism Partnership goes into 2011 flying the new strapline: 'Scotland's Dolphin Coast', and with logo evolved to match. The website is new too, with a smarter look and much more information; all part of the mission to promote tourism from Pennan to Cullen.

Other important developments are the 'Listening To Our Visitors' campaign, and an in-depth accommodation survey, to help businesses deliver even better experiences to visitors. The 'Listening To Our Visitors' questionnaires reveal what they really think, and ensure the partnership's three year plan will deliver what visitors want. With around 500 responses already in, it is going well, and partnership members are still encouraged to persuade visitors to fill one in.

The accommodation survey is not just a bed-count, but will reveal what sort of accommodation will be needed for the future; provide marketing information for businesses, and for potential investors. Results will be revealed early in 2011.

A highly successful six month membership drive in 2010 generated five new members a month, on average - much needed new blood, and two new committee members. 2011 will see consolidation, laying on new seminars and meetings, and inviting members to become more active in the plan's delivery.

As part of that, the 'Welcome' seminars have provided members with an understanding of good front of house customer care. These were well received, and will continue to be available. More ideas for seminars are planned, targeted at relevant sectors.

Banffshire Coast Tourism Partnership

Pebbles - the Partnership's new electronic magazine, is a bright, informative way of informing members, and providing relevant information.

There are now 38 information sites across the area, topped up once or twice a month, and filled with members' leaflets, and the Listening to Our Visitors questionnaires. Over 9,000 Banffshire Coast What to Do

guides flew off the stands last year, and its success means a new version for 2011. 2010 was a busy year, and the Partnership has an ambitious set of targets for 2011. Exciting times!

**Banffshire Coast
Tourism Partnership
01261) 815641
contact@
banffshirecoast.com
www.banffshirecoast.com**



Tourism Is In Our Nature

Don't let anyone try to tell you that we don't have enough to offer visitors: a new survey reveals that 40 per cent of all tourism spending in the country goes on nature activities - surely our single strongest selling point here on the Banffshire coast.

Scottish Natural Heritage (SNH) report that nature tourism generates at least £1.4 billion a year - or some £4 million a day - for the Scottish economy, and supports the equivalent of 39,000 full-time jobs.

And our flipped friends, the dolphins, are punching well above their weight when it comes to earning power. Dolphin watching on the whole east coast generates at least £4m a year locally. The entire wildlife tourism sector drives more than 1 million trips to Scotland every year, and includes activities such as birdwatching, guided walks and practical conservation holidays. Altogether this brings in a further £127m.

Surfing is growing by around 20 per cent a year, and there are around 3,000 surfers in Scotland - including of course in Banff Bay. Walking and landscape-related activities, such as hiking, generate most, bringing in around £900m a year.

Adventure activities, such as mountain biking, canoeing and kayaking, as well as horse-riding, sailing and adventure activities such as gorge walking, are worth £178m, while field sports - including game shooting, deer stalking and angling - generate a further £130m, the SNH research claims.

'We have always known that landscapes and wildlife are one



of the main reasons why visitors come to Scotland," said SNH chief executive Ian Jardine. "We also know that enjoying nature is one of the key activities they like to do when they get here. Now we know just how important that is to the economy: With spending on nature activities worth nearly 40 per cent of all tourism spending, nature-based tourism can generate significant benefits for the economy. These findings underline the need to recognise the role of nature in supporting the economy, to ensure it is managed sustainably, and to make certain that we make the best use of nature as an economic resource".

Stop Press... Latest News!

We are now well on the way to launching our brand new website, which will provide us with the technical tools to improve our marketing position. We have also taken this opportunity to review our logo and imagery. The new website will be technically very strong and will be the cornerstone to all our marketing activities.

Members will be able to see the functionality it will provide to assist in developing their businesses and getting more visitors to the area. Even though with the full committee we will take place on this Friday 2nd November at Banff Castle, the full launch is scheduled to take place during November. Very exciting... Watch this space... more news to come!

Banffshire Maritime Heritage

2010 has been another tremendous year for the Association. Three new books have been published adding to our ever-increasing library. First was a historical look at the village of Whitehills: 'Whitehills Through the Years', (ISBN 978-1-907234-04-0), this was partly funded by the Boyndie Windfarm Fund. Following that, we published a second edition of 'Along the Coast Cullen to Pennan', (ISBN 978-1-907234-08-8). This was quickly followed by the third volume in the Along the Coast series 'Along the Coast Burghead to Portknockie', (ISBN 978-1-907234-09-5).

Rumour had it that Banff Museum was at risk of being closed, so in 2009 we teamed up with the Banff Preservation and Heritage Society, because working together makes us stronger. After many meetings, in April 2010 we formed a partnership with Aberdeenshire Council, and Banff Museum to become a community museum. This partnership gives both groups space in the museum, and volunteers have extended the opening times. As a result of this, visitor numbers for the 2010 season were more than twice that of 2009. During the COAST Festival, we had 280

visitors to our Peter Anson display. We also published a small booklet of 12 pages titled 'What we like about Banff Museum' which proved to be very popular.

Our Peter Anson Sculpture planning application was initially refused by the councillors on the Banff and Buchan Area Committee, however after an appeal, which became a 'bit of a battle' our application was successful and was approved by the Scottish Government. The sculpture will be erected in the Maritime Garden, Crook o' Ness Street, Macduff, in the first half of 2011. This will coincide with the founding of



the Apostleship of the Sea, by Peter Anson in 1921, exactly 90 years earlier.

2010 was the 310th anniversary of the hanging of James Macpherson and to commemorate this we made a replica of his huge two-handed sword. This replica can be seen in Banff Museum, which will be open most Saturday mornings over the winter from 10.00am to 1.30pm.

As part of our proposed Banff Harbour Heritage Project, we refurbished the Barometer Box and Notice Board at the Battery Green Banff. ▶



◀ These were both in danger of being lost, so action was taken, including fitting perspex to the door, fitting new catches, filling and sanding, and varnishing. Sincere thanks go to DNV, Aberdeen who funded a panel which gives historical information on the barometer, the Battery Green, the Coastguard, and the Brewery, plus a further panel, which shows a Fitzroy Storm Barometer, which is now fitted inside the box. The Banff Harbour Users group objected to several of our proposals for Banff Harbour so we will not be taking them forward. What remains from the proposal is the erection of a historical notice board at the harbour, and the re-cutting or replacement of the stone, which once read 'Macdonald's Jetty'.

For 2011, we also published our annual Banff and District calendar, and this year for the first time a

Whitehills calendar. During 2010, we gave four talks to other community groups, and these were:

- Banffshire Field Club, Keith - 'The Herring Lassies - Following The Herring'.
- Roseheart Primary School - 'The Herring Lassies - Following The Herring'.
- Banff Ladies Club - 'The Herring Lassies - Following The Herring'.
- * Peterhead Probus Club - 'Along The Coast From Cullen To Collieston'.

In addition, when we are out and about we look smart now with our new T-shirts and sweatshirts, which have

our new logo based on the fishing boat on the Peter Anson Sculpture. In April we also published two sets of fishing boat postcards: set one was eight Banff fishing boats, and set two was eight Fraserburgh fishing boats. Our annual newsletter 'Nautical News' was published at our AGM in September; copies can be viewed and downloaded from our website www.banffshiremaritime.org.uk

We also headed up to Ballindalloch Castle for our Annual Outing, and were made most welcome by Claire Russell Lord-Lieutenant of

Banffshire, who met us and took time to speak to us, for which we were extremely grateful. It was a most enjoyable visit. The committee meets once a month in the Buchan Street Hall, Macduff, on the first Tuesday of the month from 7pm to 8pm. You are welcome to come along and join us. (We previously met in Macduff Town Hall but we changed venue to support the Macduff pensioners).

**Banffshire
Maritime Heritage
[banffshiremaritime@
yahoo.co.uk](mailto:banffshiremaritime@yahoo.co.uk)
www.banffshiremaritime.org.uk**



Boyndie Trust Limited

Like most in the catering, tourism or retail business, Boyndie Trust didn't have an easy ride in 2010, and there is nothing to suggest 2011 will be much better; so it is hard graft. I am happy to say, however, that we did somehow make ends meet, and that enables us to finance our charitable work, helping unemployed adults, most of whom have special needs, develop and grow their skills through work placement. That side of what we do has been busy as usual, and indeed, seems more relevant these days than ever before.

Our visitor numbers have held steady in the mid forty thousands,

and while we would have loved to grow, keeping level is not a bad result.

We work in close partnership with friends at Aberdeenshire Council delivering the training service, and of course, are aware of the budget challenges they face. Accordingly, we believe 2011 will be a year of review, change and improvement of our services and facilities, and it may be that we foster additional links with other charities and organisations.

Whatever we do, we need to preserve that 'Boyndie Magic' that makes the place so popular with so many people.

There has been more interest than ever in how Boyndie was formed, and now works. We took over a redundant building from Council, changed it into something that met the modern need identified within our community, and run it along social enterprise principals. All very relevant in current times, and a foundation that has served us well.

I will end with a couple of trends we noted in 2010, and will remember for the coming year.

All our Restaurant staff, including myself, passed professional 'Barista' training (no I didn't know what



it was either . . . it is making fancy coffee, cappuccinos, latte, mochaccino, etc) and it reinforced to us how far Scottish customer expectation has moved, from 'a mug of instant'.

The RAF Banff history display was more popular than ever, proving the trend towards growing interest in WW2 history, and particularly how it impacted upon individuals.

**Boyndie Trust Limited
Duncan Leece
The Old School, Boyndie,
Banff, AB45 2JT
01261 843249
[boyndietrust@
hotmail.com](mailto:boyndietrust@hotmail.com)
www.boyndietrust.co.uk**



COAST

FESTIVAL OF THE VISUAL ARTS

Building on the first three years of Coast a committed group have come together to deliver the 2011 Festival. The enthusiasm for Banff and Macduff to have their own community event that heralds in the summer months is undoubted, with a host of ideas and firm proposals on the table for next May.

It was always the plan that Coast would be self-sustaining. And in these financially challenging times it is heartening to see the idea of a festival being taken forward in the most sustainable way of all, by the people themselves.

Our 2011 programme will be created by the community organisations, voluntary and statutory, and individuals in the two towns - from Banff Castle to Duff House, from Community Learning to Banff & Buchan Arts Forum - and many more.

Appropriately, as the event goes through a re-birth, the group are considering the theme of Renewal for the 2011 Festival - with a number of ideas for exhibitions and workshops that involve re-invention, re-use and re-cycling. That, after all is the theme running through the new life of Coast itself, bringing together

Coast Festival, 27th - 29th May 2011

resources already in place and sharing them in an effective and useful way.

The Coast committee are always happy to consider new ideas - particularly if you want to make them

happen yourself. We can provide guidance and support from experienced people to bring your idea to life.

Coast Festival
 info@coastfestival.org.uk
 www.coastfestival.org.uk



Pearl Ozanne.



Photo: Stanley Bruce.

Gamrie Business Forum

Originally founded in 2003, the Gamrie Business Forum was formed as a partnership of businesses operating within the local community. It was established to raise the profile and attractiveness of the Gamrie area as a tourism destination, which includes the picturesque fishing villages of Gardenstown, Crovie, the adjoining rolling farmland of the outlying Gamrie area. The area has now also been expanded to include the village of Pennan. The Forum's main aims were to develop a sustainable local economy, promote the location to tourists, generate opportunities

for local businesses and provide an information source for people living in the area.

In 2005 the www.discovergardenstown.co.uk website was developed with the assistance of local businesses and Banffshire Partnership Limited. It was envisaged that the web site would help to make sure that the continuity of local services, facilities, keep the area alive. The site also ensures that the culture and history of the area is preserved for future generations.

The web site has since proved to be a quality marketing tool for the local community. It is now about to undergo an update, starting with the Business Directory.

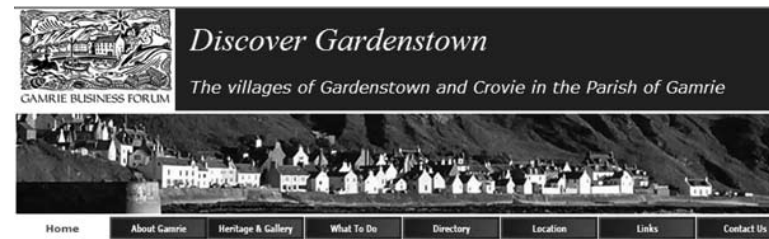
Thereby ensuring that the information contained within the site is kept as current and user-friendly as possible - **and we need your help!**

Do you own, or know someone who owns, a business operating in, or has strong links with, the Gardenstown, Crovie, Pennan and Gamrie areas, who would like to advertise their business with a Free Basic Listing? Please e-mail us your details. A Basic listing would include Business Name, Contact Name, Business Address, Business Telephone number and a brief description of the Business Activity (approx 30 words). A further Enhanced Listing, would include



all of the above, plus the addition of a Business Logo, Business E-mail Address, Business Web Address and a Business Related Photo can also be arranged (for a nominal fee). For further information about the Enhanced Listing please contact us.

If you would like to become involved in the Gamrie Business Forum please get in touch with us and we will keep you up to date with details of future meetings, developments, etc. We look forward to 2011 and to improving the benefits that we can bring to the visitors, businesses and residents of the Gardenstown, Crovie, Pennan and surrounding areas.



Gamrie Business Forum
 info@discovergardenstown.co.uk
 www.discovergardenstown.co.uk



Home Start

Support and friendship for families

Home-Start is a nationwide registered charity which supports families who have at least one child under the age of five years. Trained volunteers visit families at home and offer groups to support parents who find themselves in situations as diverse as isolation, bereavement, multiple births, illness, disability or who are just finding parenting a struggle. They provide non-judgemental practical and emotional support to help build the family's confidence and ability to cope. Home-Start's vision is to see a society in which every parent has the support they need to give their children the best possible start in life.

Home-Start Deveron operates throughout the Deveron valley area, serving Aberchirder, Banff,



Wendy Gray, Family Support Worker, leading baby massage class.

Huntly, Macduff, Portsoy, Turriff and surrounding areas. As well as home visiting sessions we offer toy libraries, Stay and Play groups, Baby Buddies groups (for parents with children under 18months), Twinkles (a group for parents with twins or more!), baby massage classes, Cooking with Confidence classes, story telling sessions, parenting classes, craft sessions, financial guidance classes and more.

Home-Start Deveron is always looking for volunteers. Volunteers are often parents themselves, or have parenting experience, and can offer regular support, friendship and practical help to families in times

Home-Start Deveron

of need. Similarly we are also seeking new Trustees to the Board to assist with the running of the organisation. Please get in touch if you are able to offer your time, skills or knowledge and you wish benefit the Deveron community. Just a few hours per week can make all the difference.

"I would absolutely recommend Home-Start to anyone as they are not just a wonderful



Join us on Facebook to keep up to date with all the news, views and upcoming events.



group but more like an extended family as the staff are so welcoming and friendly to everyone"

"Home Start has helped me through one of the toughest times in my life and I can't imagine how it would have been without them. They gave me support, encouragement and reassurance"

Home-Start Deveron
 5-7 Strait Path, Banff,
 AB45 1AD.
 01261 819964
 info@homestartdeveron.org.uk
 www.homestartdeveron.org.uk

Portsoy 75 Club

It was with great pride that the Portsoy 75 Club recognised its thirty-fifth anniversary in 2010 with celebrations, including a dinner attended by members old and new.

It proved to be a popular and thoroughly enjoyable evening where the opportunity was taken to pay tribute to all that has been done by so many members, collectively and individually for the benefit of the community, not least the raising of funds well in excess of £300,000.

But it has also been a year in which the Club has looked to the future and its determination to continue providing benefits for individuals and the community as a whole.

This year's Christmas lights including the major new set pieces at the entrances to the town were generally recognised as the best ever. After some initial problems the Hogmanay fireworks display were held again with the support of other organisations, not least the Thrift Shop with a generous donation towards

the significant costs involved.

The children's Christmas party proved hugely popular and of course the Choir continues to prove popular with audiences far and wide.

Membership remains constant at about 50, but there is always room for more and anyone over 18 wishing to support their local community and have a lot of fun doing so are welcome to contact 75 Club Chairman Brian Sutherland on 01261 843070.



Meetings are mostly held at the Station Hotel which supports the 75 Club by allowing use of their facilities for fund raising events and for the ongoing programme of talks by guest speakers.

Portsoy 75 Club
 Brian Sutherland,
 Chairman
 01261 843070



18  34

Portsoy Salmon Bothy

2010, the second full year of its operation has been an exciting one for the Salmon Bothy with its taking a giant step towards becoming a four star Visit Scotland attraction, and offering an even better experience to visitors. The Bothy's museum has been awarded provisional museum accreditation by Museums Galleries Scotland, the body which acts as the voice and expert body for over 350 Scottish museums and galleries. Sinclair Broomfield is one of the volunteers on the bothy's accreditation group. He explains: "Accreditation is important because it demonstrates that we offer a good experience to our visitors, and recognises the quality of care for our collections. Being members of Museums and Galleries Scotland gives us access to services and information about museum development and to grants and training".

The Bothy was also delighted and very proud to have received two of the Aberdeenshire 2010 Design Awards including Distinction for Conservation and the inaugural presentation of the Ian Shepherd Award for the project which was considered to be the best of all the entries attaining formal recognition at the awards ceremony.

We've also been delighted to see the use of the Bothy growing steadily as the year has progressed. Our genealogy facility is quickly becoming an established centre for advice and resources to assist people to explore their roots. Upstairs at



Portsoy Salmon Bothy

the Bothy is proving to be ever more popular with weekly meetings of knitters and artists, the craft group, camera club and yoga enthusiasts. The programme of regular talks continues to be very popular and the excellence of the accoustics and the friendly ambiance continues to attract a number of musical events, not least of which is the hugely popular monthly "Folk at the Bothy".

On the people front, our team of volunteers continues to do a great job, but there is always room for more, so if you enjoy meeting people and being involved in an exciting project and would

like to join the team, please contact our volunteer coordinator Lorna Summers on 01261 832935. And of course the whole team was delighted when our manager Leanne Watt gave birth to son Fearghal: congratulations to Leanne and Matt on the new arrival!

Upstairs at the Bothy is a unique, multi purpose area that is available to hire for all sorts of activities and events at a very reasonable rate.

Portsoy Salmon Bothy
 Links Road, Portsoy
 George Boardman,
 acting manager
 01261 842951
www.salmonbothy.org.uk

Portsoy Thrift Shop

It's been another busy year for the Thrift Shop team of volunteers with sales and donations holding up well, thanks to which we have been able to support a wide range of organisations in the town and area. Over 2010 these have included The Faering Project (boat building for a local team of young folk), Deveron Silver Band, Portsoy Out of School Club, Fordyce Toddlers, the halls at Sandend and Fordyce, new signage at the Boat Festival and donations to the

75 Club towards the costs of the Hogmanay Fireworks display and the Christmas lights.

But none of this would be possible without the support of our wonderful customers and generous donors, all of whom can be assured that, after covering the costs of the shop, which we keep as low as possible, every penny we take in goes towards helping the community in every way that we can.

And we really do have a wonderful range

on offer. So whatever you might be looking for, ranging from high quality ladies and gents clothing, an excellent range of children's clothing, toys (including a super collection of jigsaws), a wide range of bric a brac, household goods and books . . . it's all at the Thrift Shop in the Square! And everything you donate or buy is in support of good causes.

We really do offer something for everyone and it's always worth taking a few minutes to pop in and see what's



new, thanks to the very high turnover of stock that we enjoy.

Open every Monday, Tuesday, Thursday and Friday, from 10.00am to 12.00 noon and from 2.00 to 4.00pm (also contactable at the same times on 07870 536776), please call by and be assured of the warmest of welcomes from the Thrift Shop ladies!

Portsoy Thrift Shop
 The Square, Portsoy
 07870 536776

Portsoy Pavilion

Want to change your life-style, get fit and improve your health? Then Portsoy Pavilion has everything you

need! A spacious, well equipped gymnasium includes all the modern weight training and cardio-vascular machines for your fitness needs. Whether you're a fitness fanatic

or just a beginner, everything you need is under one roof here. Membership is gained through a gym induction and it's up to you from there on to achieve the fitness you want!

There is also a large all-weather Astroturf pitch on offer, available for all kinds of sports, football and tennis being most popular. All equipment is provided

and a booking is required. So, if you fancy 5-a-side football with your friends, or a relaxing game of tennis, Portsoy Pavilion is only a short distance away.

Open: Mon - Fri:
 9.30am - 8.00pm &
 Sat 10.00am - 1.00pm

Portsoy Pavilion
 Seafield Terrace, Portsoy
 (opposite Portsoy Motors)
 01261 843555





What Riverside Christian Church have been on an exciting journey of adventure for the last thirty years. In taking over the Trinity and Alvah Church building we are looking for that adventure to continue.

This is a new chapter for us which I would entitle "Investing in the Community"

This investment will be made in several strategic ways:

- An architectural gem in Banff's centre will be reclaimed and upgraded for 21st century purpose.
- Increased facilities will allow us greater investment in the life of our community especially in these times of economic restraint.

The project will allow us an even greater investment in the lives of children and young people; the future of our community. We are committed to strengthening and supporting families; the heart of our community.

For those in the



Riverside Christian Church

- Community user groups will benefit from enhanced facilities.

community who still hold dear cherished memories of their connection with this building; reconnection is made possible.

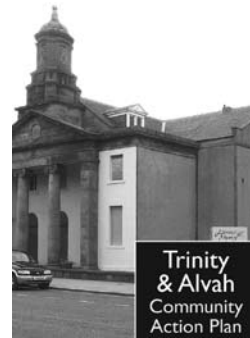
We believe our project is for the greater good of Banff and the surrounding area.

Restoration for us is two-fold. Firstly to see the return of a worshipping community to the building and also provide Banff with a high quality venue.

As with the Harvest

Centre we envisage this building will be open seven days a week.

Riverside Christian Church
The Harvest Centre
Castle Street, Banff



Scottish Traditional Boat Festival

With its great gathering of traditional vessels, craft demonstrators, music, song and dance, fine food and a host of activities to take part in, the festival is now increasingly recognised as a unique celebration of the maritime and rural cultural heritage of the the North East.

Blessed with perfect weather for the second consecutive year, the 2010 Festival was opened by the Cabinet Secretary for Education and Lifelong Learning, Mike Russell. The main themes for the year were focussed on traditional crafts and skills and the region's food and drink, all of which were enjoyed enormously by the visitors numbering in excess of 16,000.

Particular highlights to mention include the presentation of traditional crafts by GalGael, a superb, charitable organisation which engages folk of all ages and abilities in woodwork, stonemasonry and woolcrafts, their objective being to demonstrate that connecting with our

culture is a fine way of nurturing life skills and wellbeing.

Round at the Salmon Bothy area a positive cornucopia of craft skills were on display ranging from ceramics, jewellery and kilt making to knitting, weaving and pot throwing, all interspersed with eye catching exhibitions including Keith Kilt and Textile School, Moray Firth Partnership and the Gordon Highlanders Museum amongst many others.

Up at the Wally Green, the Food Fayre was the biggest ever with just under thirty exhibitors offering all that's best in the region's fine food and drink. However a major innovation was the new marquee featuring a full programme of cookery demonstrations in recognition of the national promotion "Scotland, Land of Food and Drink". Coordinated by food writer Liz Ashworth, and featuring local chefs including Jill Urquhart, plus Henry Angus from Gourmet's Choice and Alan Stewart from Food Fayre sponsors

Downies of Whitehills, the demonstration programme proved hugely successful and is certain to become a permanent feature.

Woven throughout the weekend was another year's full programme of fine music, song and dance. Coordinated by Moira Stewart, the Festival's music seems to get bigger and better each year with several international participants, plus national, regional and local stars of the traditional music scene. Topping the bill at the Friday Night Concert The Peatbog Faeries, performers over the weekend included (amongst many others) the Hyttettu Men's Choir from Norway, Katie Mackenzie, Alastair McDonald, Shanty Jack and Deveron River Brass, plus local favourites Skip to the Beat, Skip Sensations and the Anne McArthur Dancers.

And of course, there were the boats. Regular favourites included Isabella Fortuna, White Wing, Reaper and Swan, but new on the water this year were the St



Ayles' Skiffs. From all over Scotland and rowed competitively by teams of six, the skiffs proved to be hugely popular with spectators – and enjoyed by the rowers! Certain to be with us in even greater numbers next year, they are also certain to become a permanent feature of the Festival.

As ever the festival would not happen without the support of so many national, regional and local organisations and authorities, but perhaps most of all, thanks go to the people of Portsoy whose hard work (and tolerance) make the event the great success that it is.

Scottish Traditional Boat Festival
Salmon Bothy, Links Road,
Portsoy
01261 842951
www.scottishtraditionalboatfestival.org.uk

Whitehills & District Community Council



pathway created to allow construction works to continue safely within the grounds of the development, and matters reached the Scottish Government whose adjudicator sided with local residents, deeming that a safe pathway be restored within the confines of the construction site, this is now being addressed.

Our public conveniences are community run and this year we have undertaken an expensive upgrade of the facilities providing a more user-friendly atmosphere including new doors, baby-changing units, cigarette disposal facilities etc, all of which contributed to our Loo once again being awarded a 'Loo of the Year' three star award for a second year. Our grateful thanks go to the team of volunteers who do us proud on year!!

At the canine level, we continue to provide doggy bags through our nine dispensers throughout Whitehills and Boyndie at a cost to us of around £1000 per annum and we hope this service is appreciated. A 'No Dog Fouling' sign has been erected at Low Shore and a further Litter Bin has also been provided in the same area.

New Christmas lights were purchased for the village in December last year including a new feature at Red Well Court and these will brightened up the gloom in December.

A new Whitehills brochure, with an initial run of 2500, has been created and distributed as far afield as Inverness, Ballater and Elgin, highlighting and

detailing the various facilities and amenities in our area.

New planters featured round the village this past Summer, replacing the hanging baskets which struggled in our weather conditions. These along with the cart at the crossroads above the village proved a great success and will continue so to do.

We successfully arranged with Aberdeenshire Council to have lamp standards erected between Reidhaven Street and the West End. We have had two new bench seats placed at the entrance to Whitehills cemetery and are in the process of arranging erection of new galvanised entrance gates at this site. We have also arranged for new War memorial stones to be erected at the entrance to Whitehills cemetery replicating those which were vandalised at the old Boyndie Church.

Other issues in hand include discussions regarding maintenance/restoration of Boyne Castle, now handed over to Historic Scotland in view of the size of the project. Re-instatement of trees alongside the new part of the pathway to Boyndie Windfarm, which had to be re-directed to allow construction of Turbine 8. Ongoing discussions with Seafield Estate regarding flooding round the back of the 'Red Well', and discussions with Aberdeenshire Council regarding the extending of the Banffshire Way circumventing the quarry at the Burn of Boyne, hopefully to be completed by 2011.

We have made application for a grant through LEADER

with financial assistance from the Community Council to hopefully enhance the application, for funding a Broadband facility for the Boyndie and surrounding area. This seriously holds back any commercial/social enterprises existing or new.

Very recently, one of our 'younger' Community Councillors set up a Youth Group, independent of the Community Council but part-financed by same. This is already looking to be highly successful, generating a lot of interest among our young leaders of the future. More of this hopefully in next year's 'Partnership Update'.

Finally, this year we have been able to assist various local funding applications through the Boyndie Windfarm Community Fund, administered by Whitehills & District Community Council, to the extent of some £16,000. As always we are open to applications from bodies within our community Council area for funding that fits within the laid down criteria.

Whitehills & District Community Council

Ross Balharry, Chairman

01261 861882

jrbalharry@aol.com

or

Denis Askham, Secretary

01261 861742

dnsaskhm@aol.com

www.whitehillsanddistrict.co.uk

Developing Communities

Banffshire Partnership Limited (BPL) is a network of community groups formed in 1999. Although entirely independent, it is supported financially by Aberdeenshire Council, and maintains good relationships and links with various departments of that organisation.

We exist to help community groups, or whole communities, plan and develop projects, large or small. These projects may be things that create jobs, boost the local economy, or perhaps just improve the quality of life for local people and visitors to our area.

Practical examples of what we do include:

- **Helping and advising you how to draw up a business or project plan.**
- **Assisting you to market or publicise your idea.**
- **Working with you when writing funding bids and filling in forms.**
- **Putting you in touch with others who have done similar projects before.**
- **Liaising with local Council Officers, so that they know about your plans, and you know what services they may be able to offer.**

What we will not do is take your project over and run it for you. Our help is all aimed at advising, supporting and mentoring, and equipping you with the knowledge and skills to make your own idea work.

Of course, what we hope is that, when you have been successful and completed a project, you will be willing to share that experience with future newcomers. BPL's paid staff and volunteer Directors, have all been involved in community projects, and made that commitment to hand their knowledge on to others.



More and more, potential funders of your project will look for your organisation or community, to develop partnerships with other relevant groups. They will want proof that your project really does have the support of your community too. BPL is well placed to help in both cases.

Best of all, the help you get from us is nearly always free of charge, thanks to the continued valued support from Aberdeenshire Council.

For more information contact:

**Banffshire Partnership -
Developing Communities**
on 01261 843286

or E-mail bpl.contact@tiscali.co.uk



Support for Aberdeenshire Business Scheme

*To find out more about whether
Aberdeenshire Council can help
your business grow contact:*

Christine Webster (Banff and Buchan Area)
10 Commerce Street, Fraserburgh, AB43 9QA
T: 01346 519881

E: christine.webster@aberdeenshire.gov.uk
www.aberdeenshire.gov.uk/support/finance/sab.asp

Community Action Plans

Banffshire Partnership Limited offers to assist Community Councils, or other such organisations, to formulate a Community Action Plan, from the views, ideas and priorities of local people.

Our methods avoid hostilities or arguments that can arise in traditional public meetings, and allows everyone's view to be heard . . . not just those with the loudest voice.

BPL has secured grant funding under an Aberdeenshire-wide project called 'Making it Real', and this pays for most of the key costs.

BPL will run the event, collate the ideas and data generated, help you to prioritise it into achievable projects, form it into a clear and professional document, and get copies of it printed for you.

You will find it useful in helping you choose projects to do, that meet the needs of your community and can demonstrate that they have the backing of local residents.

We recommend that your Community Action Plan be given a life of about three years, as by that time, projects may have been achieved, and priorities or opportunities may have changed. Time to do it again!

For more information contact:
**Banffshire Partnership -
 Developing Communities**
 on 01261 843286 or
 E-mail bpl.contact@tiscali.co.uk



You will need to:

- **Be prepared to distribute publicity material, and twist a few arms, so that a public meeting is attended by a good number, and cross section of local residents.**
- **Hire a suitable hall for the evening, and muster some volunteers to serve teas and coffees, and a couple more to assist the BPL staff manage the crowds!**
- **Be prepared to spend a little time after the event helping BPL word the final report and supply a few photos to illustrate it.**

Community Planning in Aberdeenshire

Community Planning (CP) is a way of working, in which major providers of public and voluntary services in an area, work together with their communities to deliver better services. The Aberdeenshire Community Planning Partnership was formed in 1999 and published its first community plan in 2000.

CP became a statutory process in Scotland when the Local Government in Scotland Act 2003 came into force. The Act requires local authorities to lead the community planning process and other major public service agencies to participate in it. The partnership is required to work with its communities in order to improve the quality of life in the area.

At present the agencies and organisations signed up as Community Planning Partners across Aberdeenshire are as follows: -

- Aberdeenshire Council
- Aberdeenshire Councils for Voluntary Service Network
- Community Councils
- Grampian Fire & Rescue Service
- Grampian Police
- Local Rural Partnerships
- NHS Grampian
- Scottish Enterprise Grampian



At a more local level, each of the six areas within Aberdeenshire are represented within the CP process by a Local Community Planning Group and a Community Planning Officer.

The partnership's vision is:
 “Working together for the best quality of life for everyone in Aberdeenshire.”

Partnership working brings many benefits - organisations gain shared understanding of local issues and concerns and they can work together to deliver solutions without wasting money by duplicating each others' efforts or competing against each other. Also, by working in partnership, organisations can pool resources to enable them to tackle bigger problems and attract external funding. The inclusion of community

partners means that the better solutions can be reached and delivered in the way that best suits communities. The partnership also considers the *community* as a partner and the views of the community are fundamental to the process of CP.

For further information on Community Planning within the Banff & Buchan area please contact: -

**Fiona Alderson, Community Planning Officer,
 Banff & Buchan**
 St Leonards, Sandyhill Road, Banff
 01261 813305
fiona.alderon@aberdeenshire.gov.uk
www.ouraberdeenshire.org.uk

A Transport Service For The Community

Many people think that our buses are only for older or disabled people. Well, that's just not true! For many people who live in our area getting to and from the shops is a real problem. This is because they live too far from a service bus route, the only family car is used to get to work, or they have no car at their disposal. One of Banffshire Partnership's main aims is to help people who find themselves in these situations. We're not here to duplicate anything already provided by regular bus services, but to "fill the gaps".

We provide a service in our community in many ways:

Dial-A-Bus

BPL's Dial-A-Bus has been around for several years now under various organisational banners. You will see the buses going around the community with the distinctive blue, green and grey livery.

We serve the communities of:

- **Aberchirder**
- **Alvah**
- **Banff**
- **Boyndie**
- **Cornhill**
- **Crudie**

- **Fordyce**
- **Forglen**
- **Gamrie**
- **Gardenstown**
- **Hilton**
- **King Edward**
- **Macduff**
- **New Byth**
- **Ordiquhill**
- **Portsoy**
- **Sandend**
- **Whitehills**

We cater for people who may have difficulty getting on a normal service bus or who have problems carrying their shopping. We provide our clients with door-to-door service, which gives them access to shops and services perhaps not available in their communities. And, just as importantly, a valuable social outing. The driver is accompanied by a trained passenger assistant, who helps passengers in many ways during their journey.

Our fares are based on those for service buses, but we do accept concession cards.

The buses run at least once every week or more often from some areas and must be booked in advance. Please ring the office for more information or to register with us. We will then ask one of our staff to visit you at home.

They will explain the service more fully and make sure it suits your needs.

Community Minibuses

We have a fleet of three minibuses. All our buses are fairly new and are available for hire by registered community groups. We have two 13/14 passenger fully-accessible buses fitted with a side-step and tail lift access. Our third bus is a 16 passenger vehicle with a side-step.



We encourage the community groups to have their own drivers as this cuts down the cost of hiring the buses. However, we have a pool of



volunteer drivers and paid drivers who we can use.

As members of the Community Transport Association, we provide the nationally accredited Minibus Driver Awareness Scheme (MiDAS) training to everyone who drives our buses. So you can feel safe when you are out and about.

We charge per mile; please call us to find out the current charge. (Minimum charge of £20 per day applies)

If you would like to register your group or to find out more about driving a minibus, please call us on 01261 843598. We'd be delighted to give you more information.

Volunteers

As well as our regular staff, we have a band of committed and enthusiastic volunteers

who drive the minibuses and assist the passengers. They all say that they find the work fun, sociable and rewarding. If you have a sociable disposition and a sense of humour, perhaps you could spare the odd half day to help out. We will give you training and support and

you don't have to commit to any more time than you can manage. Just one or two half days each month would benefit a huge number of people. In this way, we can expand the service on offer. (All out of pocket expenses are reimbursed).

If you live in the Banffshire Partnership area and feel that your community could benefit from a Dial-a-Bus service or Community hire, please give us a call. We will be happy to discuss the possibilities more fully with you.

For further info contact:
Banffshire Partnership -
Community Transport
on 01261 843598
or e-mail
bpl.transport@
banffdab.org.uk

Training For The Community



Hello from Banffshire Partnership Training! I realise the name will be unfamiliar to most people reading this, but we hope to change that. My name's Alan Thomson and I'm the new boy on the block.

I live in Keith with my wife Kathleen and we have two grown up children. I've spent the past fifteen years working for the British Red Cross as a training officer and trainer. I'm still an active volunteer within the Emergency Response team.

I'm very much looking forward to the challenge of working for the Banffshire Partnership. My role within the organisation is to develop the training portfolio offered by BPL and to deliver training.

At the moment we provide Minibus Driver Assessment Scheme, Passenger Assistant

Training, Minibus Emergency Evacuation Procedures and Car Driver Training Scheme training, currently delivered by Pete Danks and Michelle Reynard, whom a lot of you will know. These are provided free to all our volunteers and for a charge to persons who are part of a community group or commercial organisation.

Our aim is to continue with, and build on the success of these courses by expanding into areas such as CI + DI and CPC (Certificate of Professional Competence) Driver Courses, and potentially PCV training.

At the time of going to print, our plans are to promote and develop other areas of training which will include a range of Health and Safety Executive approved courses including: First Aid at Work, First Aid at Work Re-qualification and Emergency First Aid at Work.

BPL Training will also offer other, more diverse courses such as Manual Handling, Assisting with Mobility, Medical Gasses, Automated External Defibrillators, etc.

We intend to include community based training courses for groups and organisations within the area. The sky really is the limit: we are experienced and flexible enough to meet the training needs of most customers.

We would welcome input from community groups, advising us of any other types of training that they would find helpful to be able to source locally from us, and we will investigate the possibility of delivering it!

Our ultimate aim is to provide our clients and user groups with a complete training package, and I'm sure with the help and support of the team at BPL we will achieve our goals.

Watch this space . . .

For further info contact:
Alan Thomson
Banffshire Partnership -
Training
on 01261 843598
or e-mail
bpl.transport@
banffdab.org.uk

Useful Community Contact Numbers

COMMUNITY GROUPS & ASSOCIATIONS

Aberchirder & District Community Association	01466 780512
Banff and Macduff Community Trust	01261 815185
Banff, Macduff & District Business Association	01261 832491
Cornhill Village Association	01466 751325
Crovie Preservation Society	01261 851176
Fordyce Community Association	01261 842951
Gardenstown Harbour Trustees	01261 851475
New Byth Community & Playing Fields Association	01888 544836
Portsoy & District Community Association	01261 842695

LOCAL RURAL PARTNERSHIP

Banffshire Partnership - Community Transport	01261 843598
Banffshire Partnership - Developing Communities	01261 843286
Banffshire Partnership - Training	01261 843598

COMMUNITY COUNCILS

Alvah & Forglan Community Council	01466 780275
Banff & Macduff Community Council	01261 815025
Cornhill & Ordiquill Community Council	01466 751326
Fordyce, Sandend & District Community Council	01261 843890
King Edward & Gamrie Community Council	01261 851616
Portsoy & District Community Council	01261 843354
Whitehills & District Community Council	01261 861742

COMMUNITY PLANNING

Aberdeenshire Community Planning Partnership	01261 813305
--	--------------

MISCELLANEOUS

Aberdeen Council of Voluntary Organisations	01224 358565
BRIDGE CVS	01771 624787
Development Trusts Association Scotland	0131 220 2456
Enterprise North East Trust	01467 672500
Rotary Club of Banff	01261 819831
Volunteer Centre Aberdeenshire	01346 585328

community transport



“keeping the community moving”

community use minibus

dial-a-bus

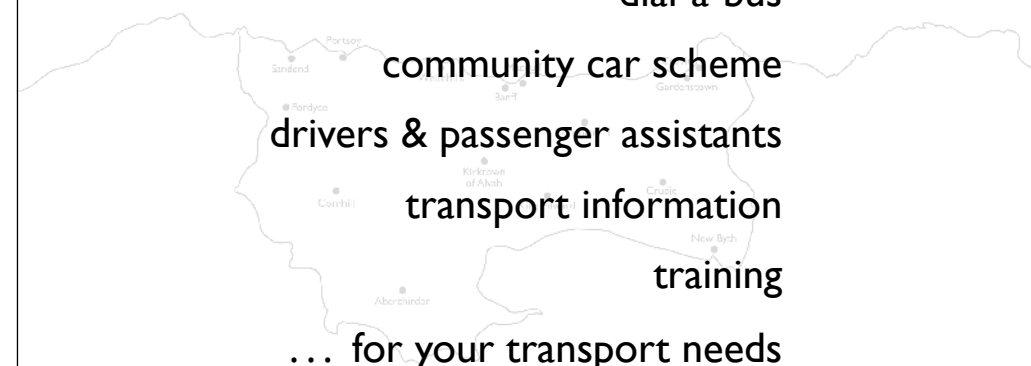
community car scheme

drivers & passenger assistants

transport information

training

... for your transport needs



B P L

**BANFFSHIRE PARTNERSHIP
COMMUNITY TRANSPORT**

The Old School Boyndie Banff AB452JT
T & F: 01261 843598 E: bpl.transport@banffdab.org.uk

training services



“training for the community”

minibus driverawareness scheme (midas)
passenger assistant training & minibus
emergency evacuation

CI + DI & CPC (certificate of
professional competence) & PCV training

Health & Safety Executive approved courses:

first aid at work
first aid at work requalification
emergency first aid at work

manual handling, assisting with mobility,
automated external defibrillators
medical gasses ... and many more

B P L

**BANFFSHIRE PARTNERSHIP
TRAINING**

The Old School Boyndie Banff AB452JT
T & F: 01261 843598 E: bpl.transport@banffdab.org.uk